

## **HF000164 – 2 Layer Coffee Table Instruction Manual**

**Safety Instructions** – please read and retain for future reference.

After unpacking, check the product for signs of transit damage - do not use if damage is found.

Keep away from fire or flammable materials.

The maximum load weight for this product is 20 kilograms.

Check that the product is stable before using it. Do not lift or move the product when it is loaded.

Parts of the assembly will be easier with 2 people.

Only use on an even/level surface.

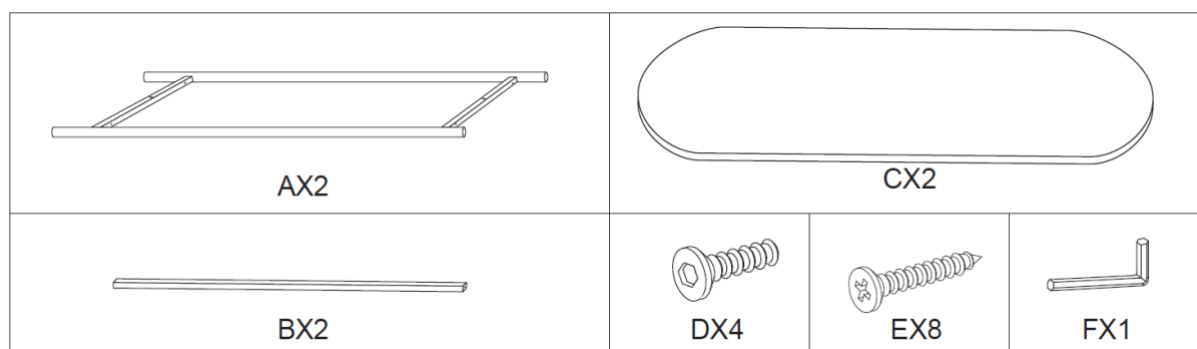
During assembly children should be kept away from the product due to possible risk of injury.

Do not allow children to play with or on the desk.

To ensure an easier assembly, we strongly advise that all fittings are only finger tightened during initial assembly. Only upon completion of the assembly should all fixing points be fully tightened.

This product is to be used solely for domestic purposes.

### **Description of Parts**



**A** – Frame X 2

**B** – Central fixing pole X 2

**C** – Tabletop X 2

**D** – Fixing bolt X 4

**E** – Tabletop fixing screw X 8

**F** - Allen key X 1

### **Care and Maintenance**

Wipe the product using a sponge or soft bristle brush and a mild cleaning solution. Never soak or immerse in the product in water.

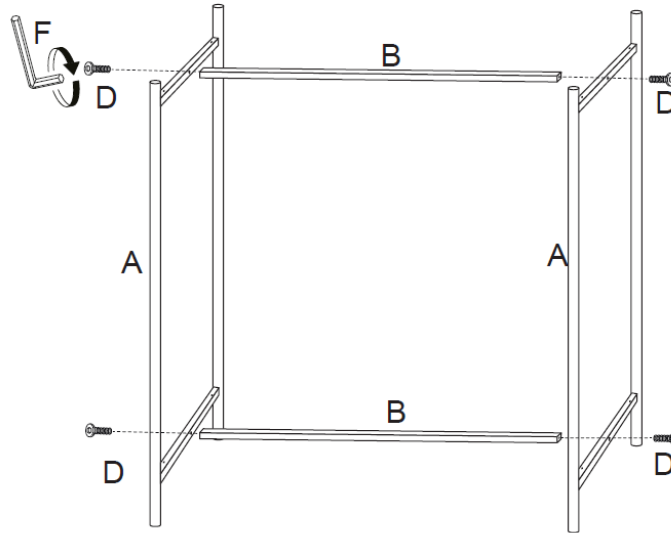
From time to time, check that there are no loose screws or bolts on this unit.

### **Assembling the 2 Layer Coffee Table**

**STEP 1:** Align the openings at the top of the frames (A) with the openings on the end of the central fixing poles (B).

**STEP 2:** Secure the frames to the central fixing poles using the four fixing bolts (D) and the Allen key (F) provided (as per image 1 below).

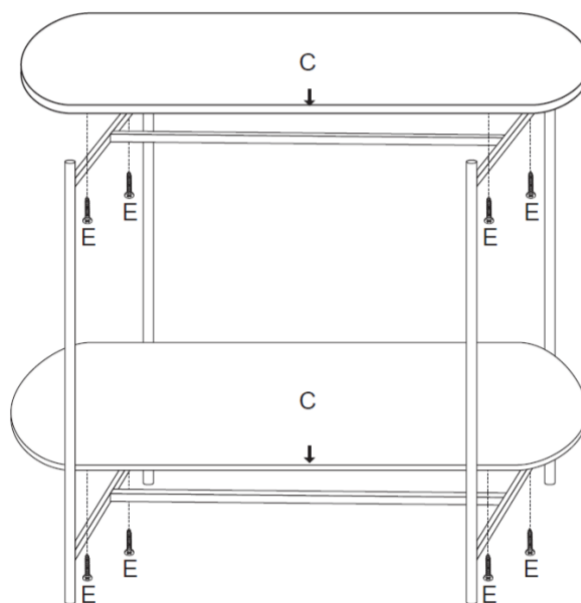
1



**STEP 3:** Slide the lower tabletop (C) on top of the assembled frame, ensuring that the indents on the underside of the tabletop align with the openings on the central fixing poles.

**STEP 4:** Secure the tabletop to the central fixing poles using four of the tabletop fixing screws (E) and a pozi screwdriver (as per image 2 below).

2



**STEP 5:** Repeat the process described in Step 4 for the second tabletop, before using the table as desired.

**NOTE:** Avoid securely fixing the bolts into place until the table is fully assembled.

### **Disposal**

This product should not be discarded within household waste. Take to your local recycling station for disposal.

**Model Number (s):** HF0000164

**Dimensions:** 85x40x45cm (approx.)

**Manufactured by:** Online Home Shop LTD, Priestley Road, Manchester, M28 2LX, UK.

**For Online Support:** [support@onlinehomeshop.com](mailto:support@onlinehomeshop.com)

Made in China